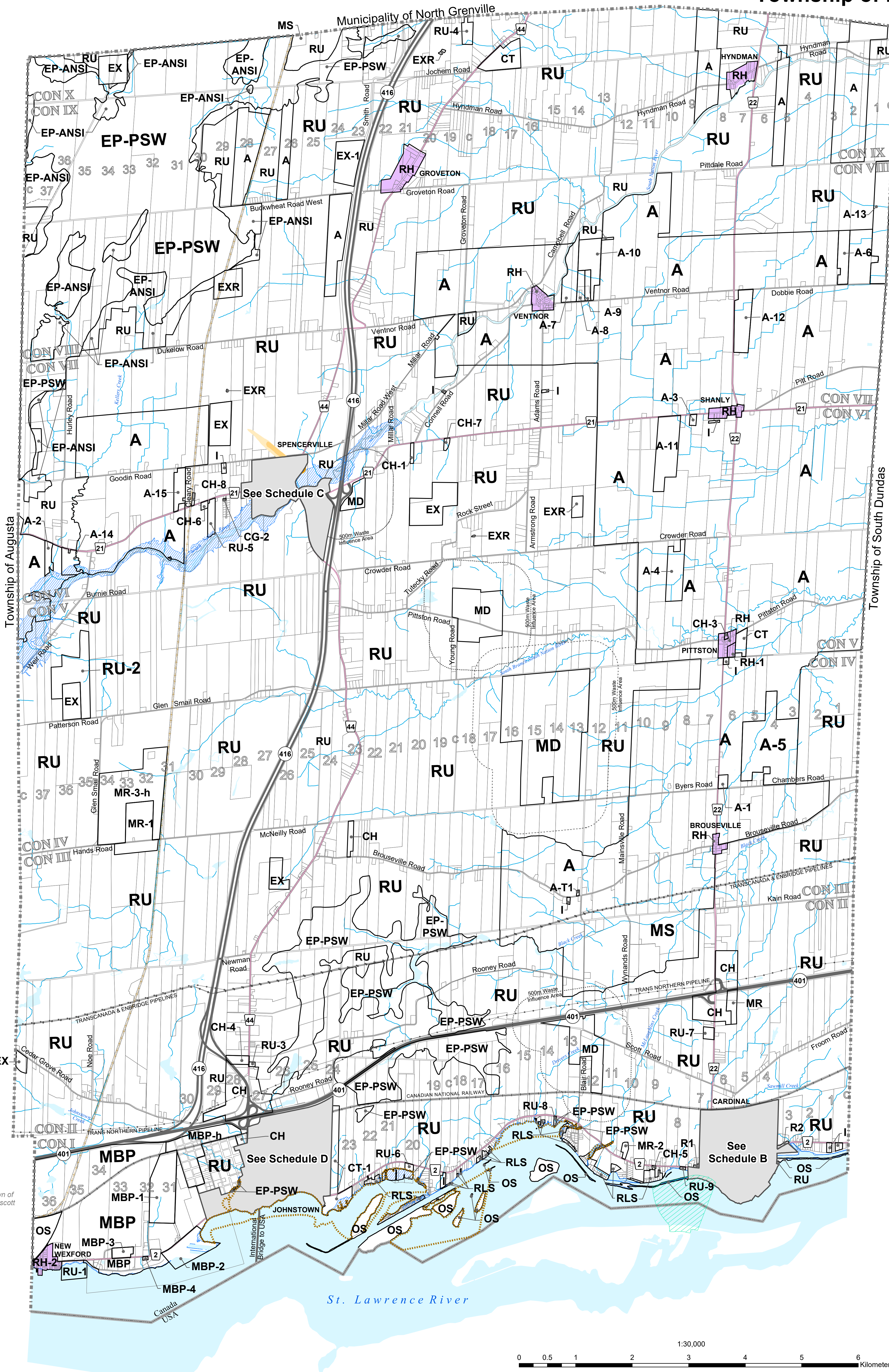
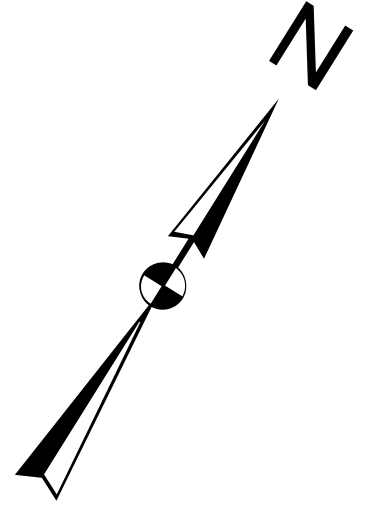


# ZONING BY-LAW NO. 2022-37 SCHEDULE A

Township of Edwardsburgh Cardinal



### ZONING

- R1 Residential First Density
- R2 Residential Second Density
- R3 Residential Third Density
- RH Hamlet Residential
- RLS Limited Services Residential
- MCR Main Street Commercial / Residential
- MC Main Street Commercial
- CG General Commercial
- CH Highway Commercial
- CT Tourist Commercial
- MG General Industrial
- MR Rural Industrial
- MBP Business Park Industrial
- MS Salvage Yard Industrial
- MD Disposal Industrial
- I Institutional
- OS Open Space
- RU Rural
- A Agriculture
- EX Mineral Aggregate Extraction
- EXR Mineral Aggregate Reserve
- EP-PSW Environmental Protection - PSW
- EP-ANSI Environmental Protection - ANSI

### Overlay Zones

- Flood Plain Overlay
- Source Water Protection Overlay
- Intake Protection Zone Overlay (IPZ-1)
- Wellhead Protection Area A Overlay (WHPA-A)
- Wellhead Protection Area B Overlay (WHPA-B)
- Wellhead Protection Area C Overlay (WHPA-C)
- Settlement Policy Area
- Waterbody
- Watercourse

- Within these areas certain Zoning By-law Provisions require that reference be made to the Official Plan

### TRANSPORTATION

- Provincial Highway
- County Road
- Township Road
- Private Road
- Active Railway
- Abandoned Railway

ISSUE DATE: JUNE, 2022  
OFFICE CONSOLIDATION: APRIL, 2024



Engineers, Planners & Landscape Architects  
Unit 200, 1200 Woodland Crescent Drive  
Ottawa, Ontario, Canada  
K1H 8L9  
Tel: 613-234-2443  
Fax: 613-234-2447  
www.novatech-eng.com

THIS PLAN IS BASED UPON INFORMATION OBTAINED IN JUNE 2018 THROUGH A DIGITAL DATA RELEASE AGREEMENT WITH THE UNITED COUNTIES OF LEEDS & GRENVILLE AND INCLUDES DATA FROM THE PROVINCE OF ONTARIO'S ONTARIO GEOSPATIAL DATA EXCHANGE DATABASE (LAND INFORMATION ONTARIO), MUNICIPAL PROPERTY ASSESSMENT CORPORATION AND TERANET INC. AND ALSO INCLUDES DATA OWNED AND/OR USED UNDER AGREEMENTS WITH SOUTH NATION CONSERVATION AUTHORITY.

JOB# 120067

